



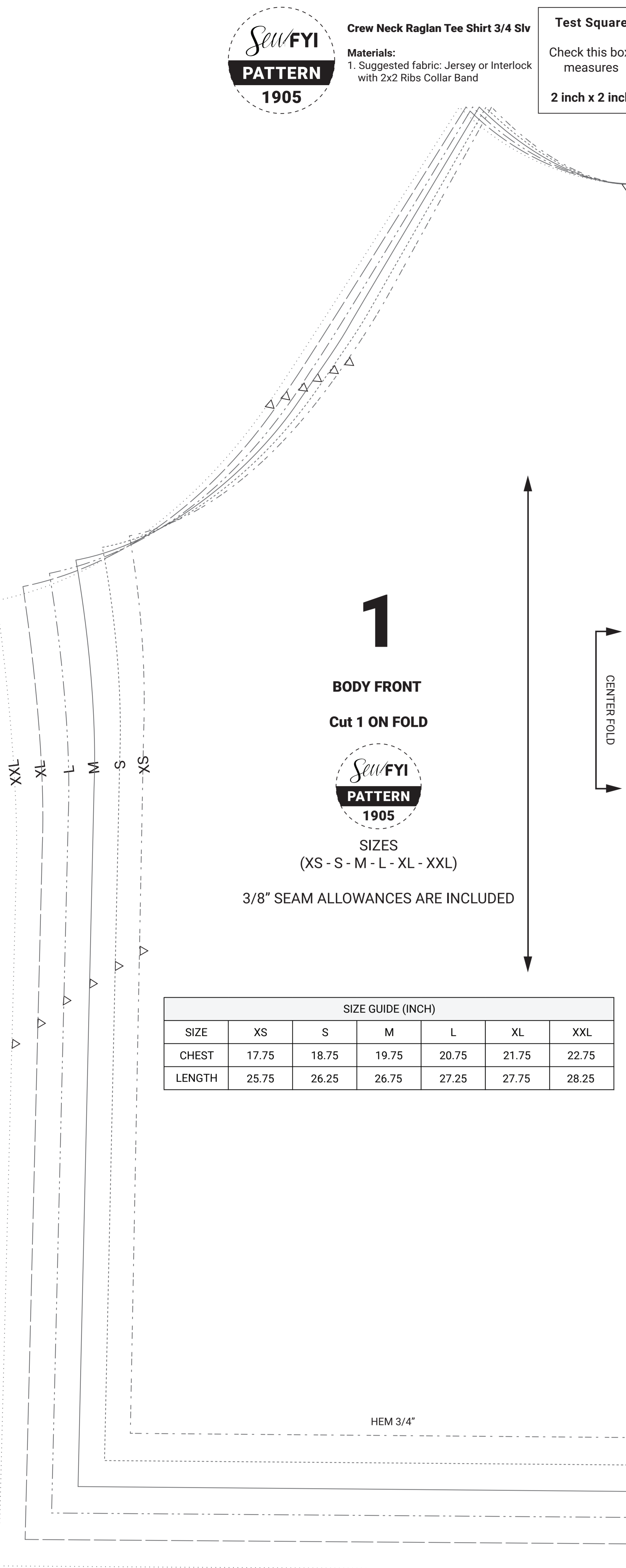
**Crew Neck Raglan Tee Shirt 3/4 Slv**

**Materials:**  
1. Suggested fabric: Jersey or Interlock with 2x2 Ribs Collar Band

**Test Square**

Check this box measures

2 inch x 2 inch



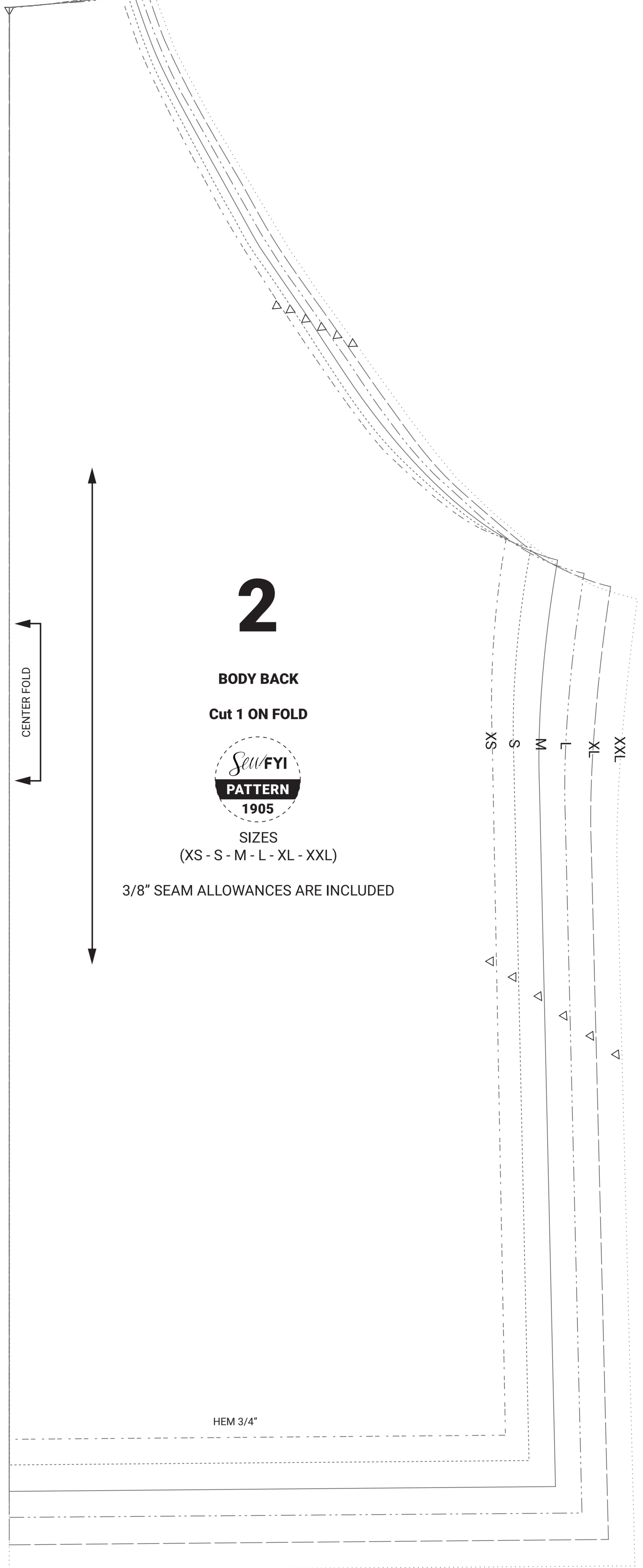
**1**  
**BODY FRONT**  
Cut 1 ON FOLD



SIZES  
(XS - S - M - L - XL - XXL)

3/8" SEAM ALLOWANCES ARE INCLUDED

SIZE GUIDE (INCH)						
SIZE	XS	S	M	L	XL	XXL
CHEST	17.75	18.75	19.75	20.75	21.75	22.75
LENGTH	25.75	26.25	26.75	27.25	27.75	28.25

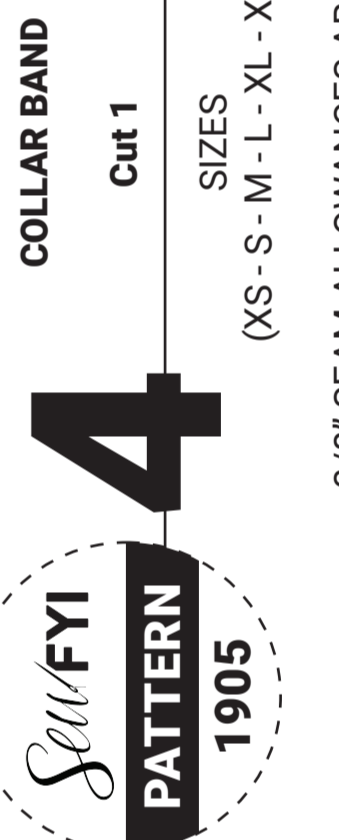
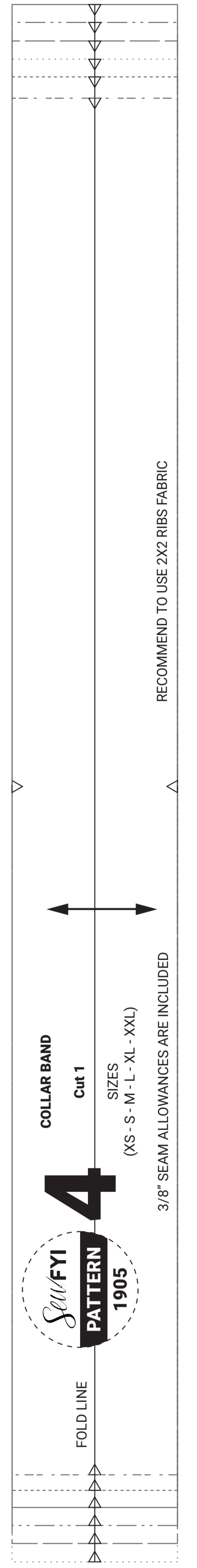


**2**  
**BODY BACK**  
Cut 1 ON FOLD



SIZES  
(XS - S - M - L - XL - XXL)

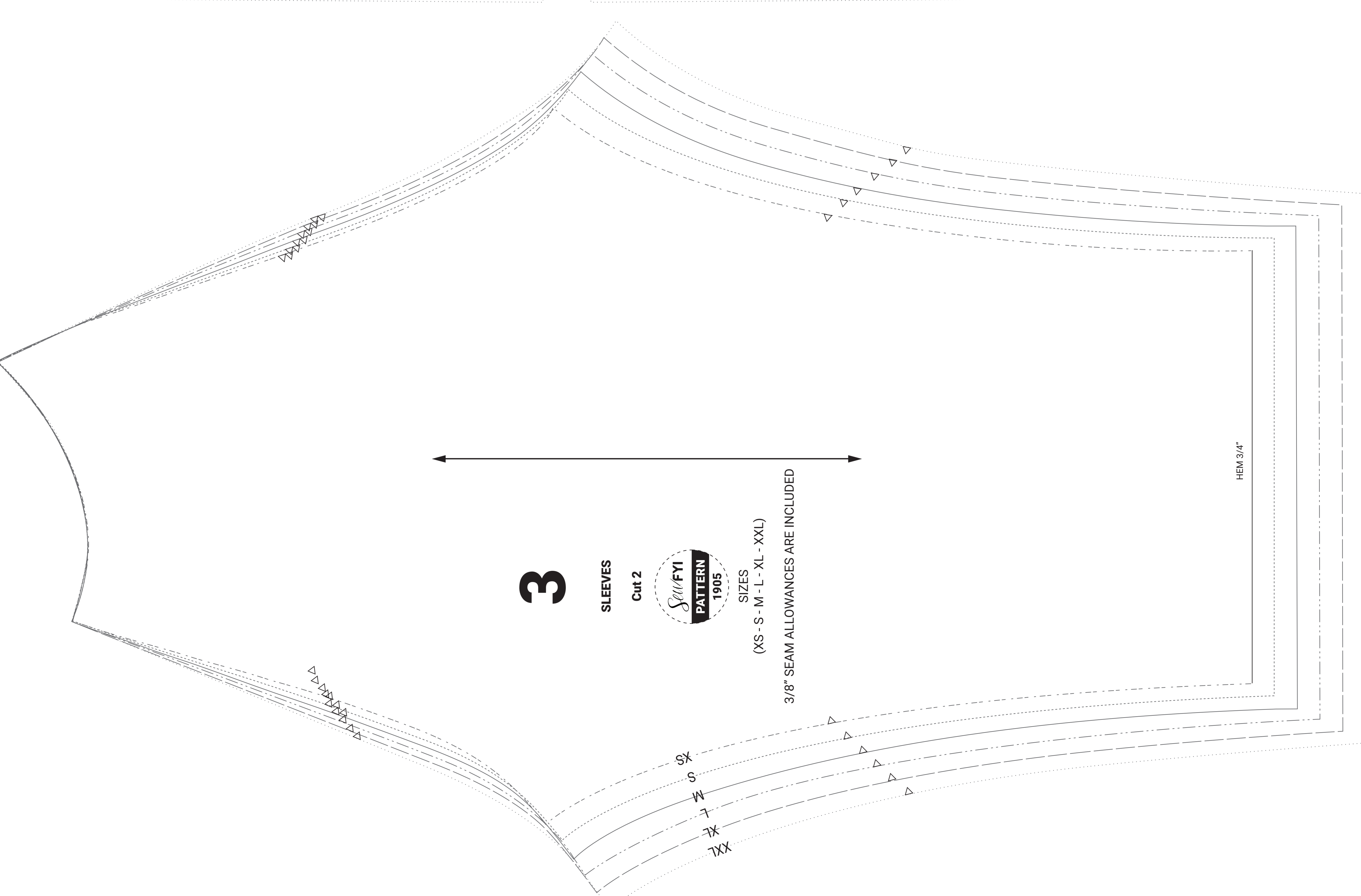
3/8" SEAM ALLOWANCES ARE INCLUDED



SIZES  
(XS - S - M - L - XL - XXL)

3/8" SEAM ALLOWANCES ARE INCLUDED

RECOMMEND TO USE 2X2 RIBS FABRIC



**3**

**SLEEVES**

Cut 2



SIZES  
(XS - S - M - L - XL - XXL)

3/8" SEAM ALLOWANCES ARE INCLUDED

HEM 3/4"